



Nebraska Coalition
for Lifesaving Cures

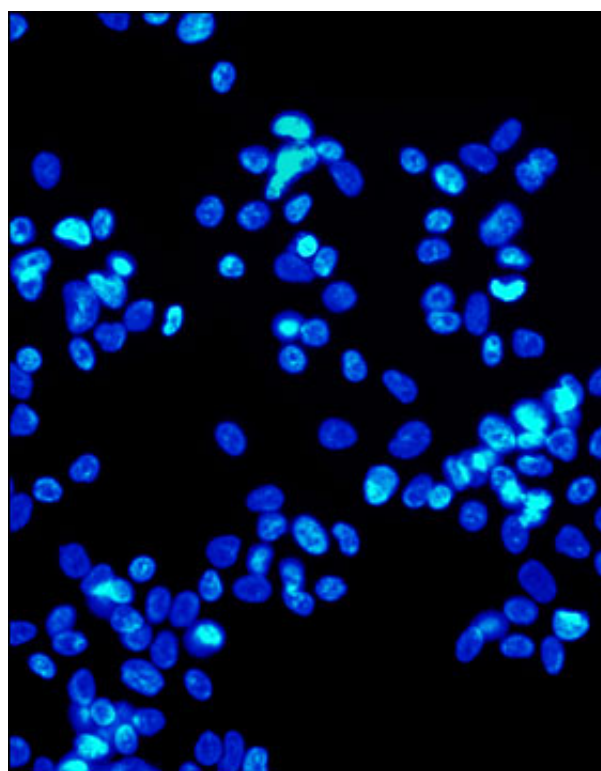
The Newsletter of the Nebraska Coalition for Lifesaving Cures
January, 2013

Supreme Court allows federal stem cell research to continue

The Supreme Court on January 7 dismissed a long-standing appeal from scientists who tried to block funding of stem cell research on human embryos.

The brief order from the justices is a victory for supporters of federally funded testing to combat a range of diseases and illnesses. Federal courts had previously lifted an injunction on continued funding, and this latest high court action probably means the lawsuits will be ultimately dismissed.

[Full Story on CNN.com \(01-08-2013\)](#)



[A closer look at Stem Cell treatments](#)

[Concerns about Stem Cell tourism](#)

[Patients Guide to Stem Cell treatments](#)

In the Flesh: The Embedded Dangers of Untested Stem Cell Cosmetics

A California woman opts for a relatively new kind of cosmetic procedure at a different clinic in Beverly Hills—a face-lift that made use of her own adult stem cells. Three months later, she could not open her right eye without considerable pain and every time she forced it open, she heard a strange click.

It was later discovered that during her face-lift, clinicians had accidentally injected some dermal filler. The

principal component of such fillers is calcium hydroxylapatite, a mineral which encourages stem cells to turn into bone—a fact that escaped the woman's clinicians.

[Full Story in *Scientific American* \(12-17-2012\)](#)

Advanced Cell Technology Achieves Clinical Milestone

Advanced Cell Technology announced in early January that investigators for the Company's Phase I/II clinical trials for Stargardt's macular dystrophy (SMD) and dry age-related macular degeneration (dry AMD) have observed evidence of engraftment of the transplanted human embryonic stem cell (hESC)-derived retinal pigment epithelial (RPE) cells and visual acuity gain in patients treated over the 18 months since the trials were first initiated.

The Company believes this observation of engraftment and persistence is clinically important because engraftment of cells in the proper area, and recapitulation of normal RPE cell layer structure is important to the ultimate efficacy of the RPE cells in the treatments. Additionally, investigators have not observed any issues of safety relating to the transplanted human embryonic stem cell (hESC)-derived RPE cells in any of the 18 patients treated. The company believes this warrants early (though cautious) optimism as the company looks forward to initiating the second half of the three trials.

[Full Story in *EON BusinessWire* \(01-08-2013\)](#)



Most popular stem cell stories of 2012: diabetes, spinal cord injury, and what the future holds

The California Institute for Regenerative Medicine lists their top five stem cell stories of 2012, including a possible therapy for diabetes, Irv Weissman's paper on barriers to stem cell therapies and why they matter, an interview with a participant in Geron's trial for spinal cord injury, and a post looking into the stem cell crystal ball.

[Full Story in the *California Institute for Regenerative Medicine Blog* \(12-20-2012\)](#)

Nebraska Coalition
for Lifesaving Cures